



WESTWOODLEBER
LET US GUIDE YOU HOME

Beechfield, Hoddesdon, EN11 9QQ
Guide price £475,000



Beechfield, Hoddesdon, EN11 9QQ

Westwood Leber are delighted to bring to the market this well-presented three-bedroom end of terrace family home, ideally located within the popular residential area of Beechfield, Hoddesdon.

The property offers spacious and thoughtfully arranged accommodation across two floors. The ground floor features a generous living room, providing a comfortable and welcoming space for everyday living. To the rear, the impressive kitchen/breakfast room forms the heart of the home, offering excellent worktop and storage space along with ample room for dining and entertaining. Bi-fold doors open directly onto the rear garden, creating a seamless indoor-outdoor flow and making this an ideal space for both family life and social gatherings. A ground floor cloakroom adds further convenience.

To the first floor, the property comprises three well-proportioned bedrooms, including two doubles and a further single bedroom, ideal for a child's room, home office or guest space. A family bathroom completes the first-floor accommodation.

Externally, the property benefits from a private rear garden, perfect for outdoor entertaining and family use. A particular advantage of this home is the garage located to the rear of the property, providing secure parking or valuable additional storage.

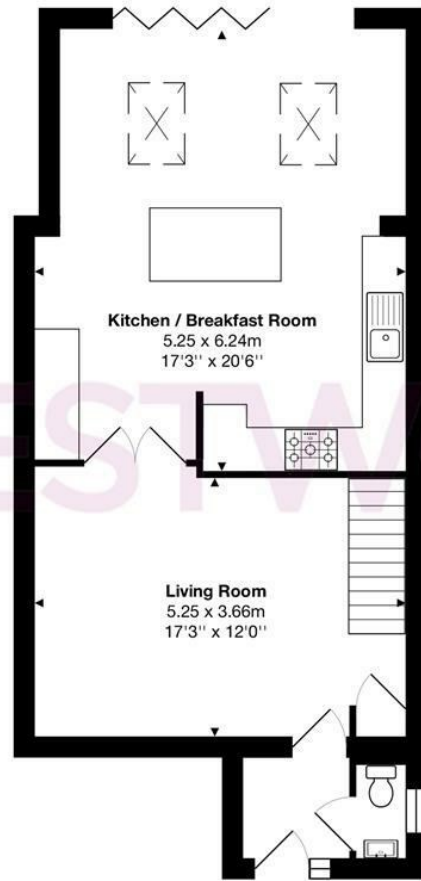
Beechfield is well positioned for access to Hoddesdon town centre, offering a variety of shops, cafés and amenities. Excellent transport links are close by, including Broxbourne and Rye House stations with direct services into London Liverpool Street, as well as convenient access to the A10 for commuters.

An early viewing is highly recommended to fully appreciate the space, location and features this attractive end of terrace home has to offer.

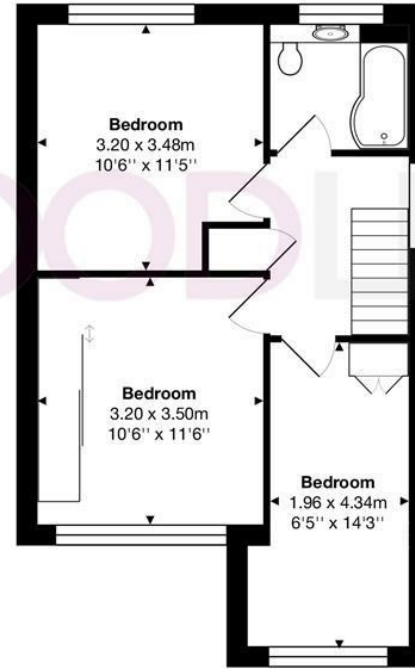


W WESTWOODLEBER

W WESTWOODLEBER
LET US GUIDE YOU HOME



Ground Floor



First Floor

Total Area: approx. 96.6 m² ... 1040 ft²

THE FLOORPLAN IS FOR ILLUSTRATIVE PURPOSES ONLY AND IS NOT TO SCALE.
Measurements and features are approximate and may differ from the actual property. Verify all details independently; no liability is accepted for errors or omissions.

Property marketing provided by www.fotomarketing.co.uk







WESTWOODLEBER



WESTWOODLEBER



WESTWOODLEBER



WESTWOODLEBER



